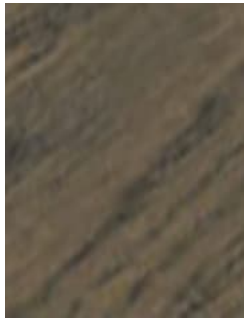


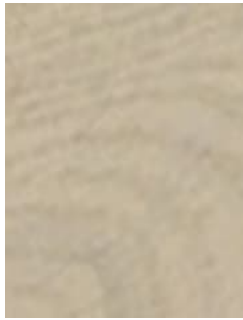
# Corsica Chevron



**180**  
**Coffee Oak**



**310**  
**Natural Oak Brush**



**510**  
**Coastal Oak**



**560**  
**Weathered Oak**

# Corsica Chevron

Ultimate timber flooring luxury, Corsica Chevron features multi-layer construction with real European Oak timber surface. It's been designed with tongue and groove installation system, making it easier to install than ever before.

## Technical Data

<b>Type:</b>	Timber Flooring	<b>Finish:</b>	Matte Finish with light brush
<b>Dimensions:</b>	620mm x 125mm	<b>Surface:</b>	French Oak Veneer
<b>Total Product Thickness:</b>	14mm	<b>Substrate Layer:</b>	Multiply
<b>Wear Layer:</b>	3mm	<b>Backing Layer:</b>	Ply
<b>Units Per Box:</b>	20 boards (10 left, 10 right)	<b>Profile:</b>	Micro Bevel Edge
<b>m<sup>2</sup> per box:</b>	1.55	<b>Coating System:</b>	UV Cured Lacquer
<b>m<sup>2</sup> per pallet:</b>	74.4	<b>Installation Method:</b>	Tongue & Groove
<b>Colours:</b>	4		

## Performance

<b>Moisture Content:</b>	(EN 131831-1) 8-11% (+/-2%) at time of delivery	<b>Smoke Value:</b>	(EN ISO 9239) 17% minutes
<b>Lipping:</b>	(EN13489) ≤0.2mm	<b>Slip Resistance:</b>	(AS 4586) P4
<b>Impact Sound Reduction:</b>	Please refer to Godfrey Hirst Acoustic Performance specification sheet	<b>Warranty:</b>	25 Year Timber Limited Residential Warranty*
<b>Flammability:</b>	(EN ISO 9239) CRF 3.8kW/m <sup>2</sup>		

## Sustainability

<b>Product Transparency:</b>	PEFC Chain of Custody certified.
<b>Accreditation:</b>	Manufactured under a quality and environmental system certified and complying with ISO 9001 and ISO 14001 by an accredited certification body.
<b>Indoor Air Quality:</b>	Green Building Council compliant for VOC emission rate limits



All Godfrey Hirst engineered timber floors must be installed in accordance with the relevant Australian Standards and in conjunction with the Godfrey Hirst Timber Floors Installation Instructions.  
 \*This product comes with a residential warranty for new product installed indoors in a residential home, if properly installed and maintained. This warranty is in addition to consumers' rights under the statutory consumer guarantee provisions in the Australian Consumer Law, which may exceed the rights under this warranty. The amount recoverable under the warranty decreases after five years. For full information in respect to the scope and limitations of this warranty, please refer to the full terms and conditions available from your retailer, by calling 1300 444 776, or by download from [www.godfreyhirst.com](http://www.godfreyhirst.com).

†Terms and conditions apply to all commercial warranties - contact your GH Commercial Account Manager.

\* Nested/Random lengths may occur. As this is a natural products, some boxes may include one 'nested' board (i.e. two boards comprising of the quoted board length). All boxes will provide the coverage quoted.